

## Salvador Allende (1908-1973)

- Surgeon by profession and President of Chile from 1970-1973
- First Marxist in the world to win a presidential election via a democratic process
- His political party, *Unidad Popular*, sought to govern by socialist principals and to carry out socialist reforms through legal and democratic processes

## Augusto Pinochet (1915-2006)

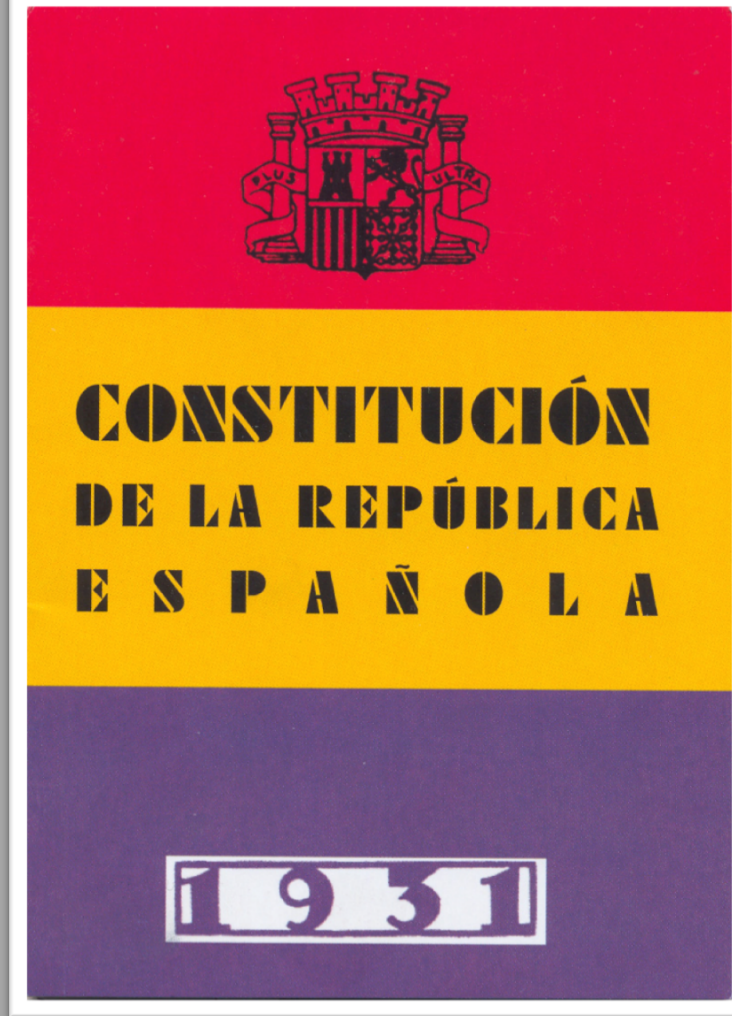
- Dictator of Chile from 1973-1990
- Senator from 1998-2002

## *Machuca* (2004)

- Presents an alternative narrative about the social climate in Chile in 1973 leading up to the coup d'état. Specifically, it posits white supremacy as the key factor that explains the popular support for the coup and the subsequent military regime.

## Terms

- Criollo* – person of European ancestry
- Mestizo* – person of mixed European and Indigenous ancestry
- Indígena* – person of indigenous ancestry or who is native to the Americas



# The Second Republic of Spain (1931-1939)

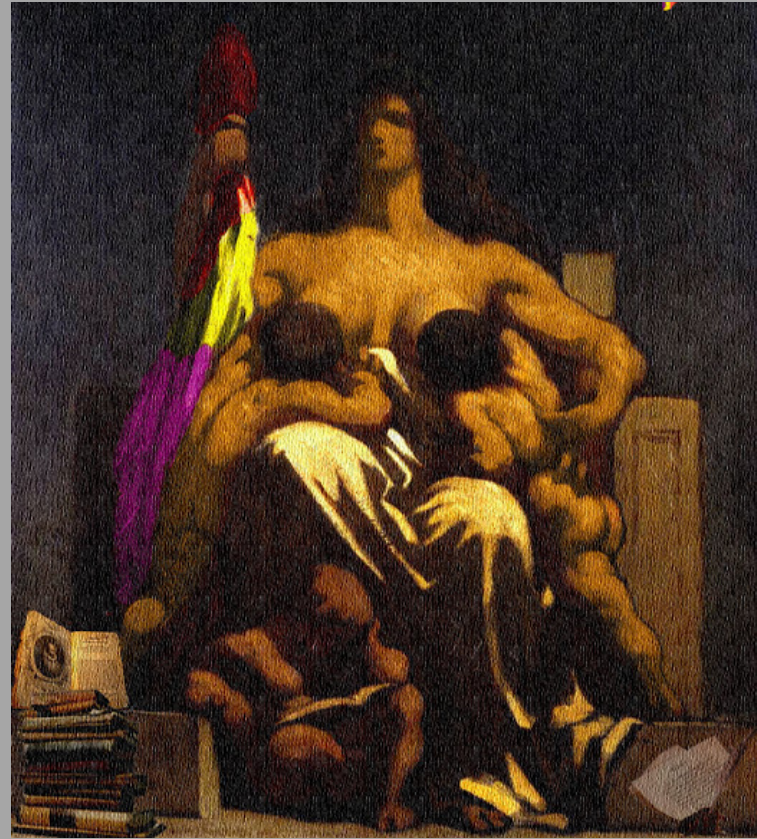
**Spanish Civil War: 1936-1939**



El Niño es la Mayor Promesa de la Patria



*La niña bonita* was the Second Republic's version of *Lady Liberty*



How might we interpret Silvana as a metaphor of *La niña bonita*?

What innovative change do we see in her embodiment as *La niña bonita*?

In what way does it make sense for the director to draw from the iconography of Spain's Second Republic to construct the figure of Silvana?